



 **MANITOU**
HANDLING YOUR WORLD

SPRING EDITION

manitou.com

2024

CELEBRATING MANITOU: THE LEGEND OF ROUGH TERRAIN IN AUSTRALIA

When it comes to handling rough terrain in Australia, the Manitou name is as iconic as it gets. Much like how we refer to vacuum cleaners as “Hoovers” or pressure washers as “Gernies,” Manitou has become the go-to term for rugged machinery. For over 50 years, this brand has set the standard in performance and durability, making it a staple in the Aussie landscape.

Manitou’s journey in Australia began back in 1973, marking over five decades of delivering top-notch machinery down under. The brand’s origins trace back to 1958 when Marcel Braud and the Braud family introduced the first Manitou machine. From its inception, the name has stood for quality, reliability, and outstanding performance, a reputation that

remains firmly established in the Australian market today.

Initially, Manitou made its mark with rough terrain forklifts. These machines quickly became essential in both construction and agriculture, sectors where they continue to excel. You might still spot some of the earliest models, like the MB30, hard at work in regional Australia. They might not clock the hours of newer models, but their ongoing operation speaks volumes about the Manitou brand’s resilience and sustainability.



World’s first rough terrain fork lift truck invented by the founder of Manitou, Marcel Braud in 1958.



Oldest Manitou found in Australia: a MB20C (1974 model) found near Adelaide. This machine was originally imported by Blackwood Hodge in Adelaide and sold to Trotta Bros. Building Co in Kapunda (SA). This MB20C is still owned today by the Trotta family and is used regularly to move equipment in their storage yard.

MANITOU

Cleans up, sprays, digs, loads, moves trees. With just one man.

The Manitou from Noyes now arrives in Australia after revolutionising the rural scene in Europe. The Manitou is a rugged all-terrain materials handler. It combines some of the functions of a tractor, an earth-mover and a fork-lift, yet is much more useful and adaptable than any of these.

On a farm, the Manitou can stack bales, clean a barn, spray crops, unload trucks, dig or clean a dam, load fruit or cereals, carry giant trees, all on the roughest terrain. With just one man.

A tractor can do some of these jobs, but it isn't built with the front-end strength of a Manitou.

The Manitou is built tough to work hard at both ends. It's available in 2 or 4-wheel drive. It's a balanced loader, and a balanced fork-lift truck from 2 to 6 tonne capacity.

And an amazing range of attachments for rural use to help increase your profits.

Write or phone now for complete literature on the Manitou. Can your farm afford not to have a Manitou?

TO: Noyes Bros. Pty. Limited
Mining & Construction Division
Frederick Street St. Leonards NSW 2065
Phone (02) 430 4566
Name _____
Address _____
P. Code _____

NOYES BROS. PTY. LIMITED

• Brisbane 271 2144 • Melbourne 369 2933
• Hobart 72 6621 • Burnie 312 799
• Adelaide 223 2111 • Perth 444 0688

RIS 617

POWER FARMING MAGAZINE — DECEMBER, 1981

Manitou ad featured in Power Farming magazine in December 1981.



Each year, principals from the Manitou Dealer Network in Oceania come together to discuss results and set the business direction for Manitou in the region.

The name “Buggie” is another piece of Manitou’s legacy. Originally known as the 4RM20HP, this compact rough terrain forklift became widely referred to as the “Buggie” due to its manageable dimensions and height of just 1850mm. Today, “Buggie” has become synonymous with compact rough terrain forklifts in Australia, showcasing how a name can become embedded in industry vernacular. Despite new competitors entering the market, Manitou remains the benchmark, with plans for a new “Buggie” model on the horizon.

But let’s not forget that Manitou’s portfolio extends beyond forklifts. Their range includes industrial forklifts, Telehandlers, MEWPs (Mobile Elevating Work Platforms), skid loaders, track loaders, and rotational Telehandlers. Each piece of equipment is designed to tackle tough jobs and help customers handle their world with ease and efficiency.

Manitou’s commitment to its customers is evident in its long-standing relationships. Whether it’s a 30-year partnership with the Australian Defence Force, collaborations with the nation’s largest rental companies, or support for smaller operations like a local brick carrier, Manitou has consistently demonstrated a spirit of dedication and passion. Even as recent years have posed challenges, Manitou remains enthusiastic about the future in Australia.

Looking ahead, Manitou is ready to leverage past and present challenges to drive innovation and lead the industry to new heights. It’s not just about lifting equipment; it’s about setting new standards and propelling Australia forward. With a legacy of excellence and a forward-thinking approach, Manitou is poised to continue making an impact and setting the pace for the industry in Australia.

Maniplus.



3.99% FINANCE*

MLT-X 841 *NEW AG XL*



Max. capacity	4100 kg
Max. lifting height	7.60 m
Breakout force with bucket	5268 daN
Ground clearance	0.43 m

[CLICK HERE FOR MORE SPECS](#)

* Promotion ends 31/10/2024 or while stocks last. Image for illustration only. Full T&Cs available here.

AG TELEHANDLERS

MLT-X 741

WITH 3YR/3000HR TOTAL COVER
EXTENDED WARRANTY

\$159,999^{+GST*}



[FIND YOUR DEALER HERE](#)

The **MLT-X 741** comes into Australia beefing up the Long standing MLT-X 735 T LSU and is the perfect companion to the MLT-X 732. Designed for agriculture, it features an auto reversing fan engine pre filter ideal and Boom head brushes as standard, ideal for dusty environments. The JSM (Joystick Switch and Move) load sensing pump and dedicated Agriculture specific Boom design are just some of the features that ensure maximum productivity, performance and safety.

[CLICK HERE FOR MORE SPECS](#)

Max. capacity	4100 kg
Max. lifting height	6.90 m
Breakout force with bucket	6825 daN
Ground clearance	0.44 m

MLT-X 850

NEW AG XL  ELITE

FROM \$234,850^{+GST*}

The Manitou MLT-X 850 Ag Telehandler is your ideal agricultural partner. With a powerful 145 hp engine and a 4,900 kg lift capacity, it handles heavy loads effortlessly. Its advanced Intelligent Hydraulic, Ergonomic cab with easy Step and ultra quiet 69dB to the operators ear ensures maximum productivity and levels of comfort. Reach up to 7.55 meters high and 4.35 meters forward with ease. Enhance your productivity with the versatile and reliable MLT-X 850.



[CLICK HERE FOR MORE SPECS](#)

Max. capacity	4999 kg
Max. lifting height	7.60 m
Breakout force with bucket	8670 daN
Ground clearance	0.45 m



* Promotion ends 31/10/2024 or while stocks last. Image for illustration only. Full T&Cs available here.

[CLICK HERE FOR MORE SPECS](#)



[FIND YOUR DEALER HERE](#)

MLT-X 961

NEW AG XL  ELITE

FROM \$244,961^{+GST*}

Max. capacity	6000 kg
Max. lifting height	9 m
Breakout force with bucket	7300 daN
Ground clearance	0.45 m

Because when we put 6t on the door, we mean it!

The Manitou MLT-X 961 is designed for heavy-duty agricultural tasks, offering a lifting capacity of 6,000 kg and a maximum height of 9 meters. Its robust design and powerful engine ensure top performance and durability. The spacious, ergonomic cab enhances comfort and visibility, ensuring efficient and safe operation.

THE CLASSIC COLLECTION



Elevate and refine your expectations in rough terrain material handling with Manitou Australia's exclusive Classic Collection offer. For a limited time, experience selected NewAg and NewAg XL models at special prices and discover why Manitou leads in innovation, ergonomics, performance, reliability, and reduced Total Cost of Ownership (TCO).

[FIND YOUR DEALER HERE](#)

CLASSIC



3.99% FINANCE

MLT 630 FROM \$147,630^{+GST*}

Max. capacity

3000 kg

Max. lifting height

6 m

[CLICK HERE FOR MORE SPECS](#)

CLASSIC



3.99% FINANCE

MLT-X 737 FROM \$164,737^{+GST*}

Max. capacity

3700 kg

Max. lifting height

6.90 m

[CLICK HERE FOR MORE SPECS](#)

CLASSIC



MLT-X 961 FROM \$239,961^{+GST*}

Max. capacity

6000 kg

Max. lifting height

9 m

[CLICK HERE FOR MORE SPECS](#)

Promotion ends 31/10/2024 or while stocks last. Image for illustration only. Full T&Cs available here.



LAUNCH OF THE PRUNING GRAPPLE SAW

The Manitou Pruning Grapple Saw stands out as an essential tool in the realm of forestry and vegetation management, offering a range of benefits that contribute to efficiency, safety, and precision in pruning operations. This solution seamlessly..., seamlessly integrates with our MRT Vision + rotating telehandlers to enhance their capabilities. The E-RECO system allows the machine to recognize the attachment, pre load the Dynamic load chart and allow full functionality of the attachment through the existing controls on the machine. and pre-load all settings to start working with it.

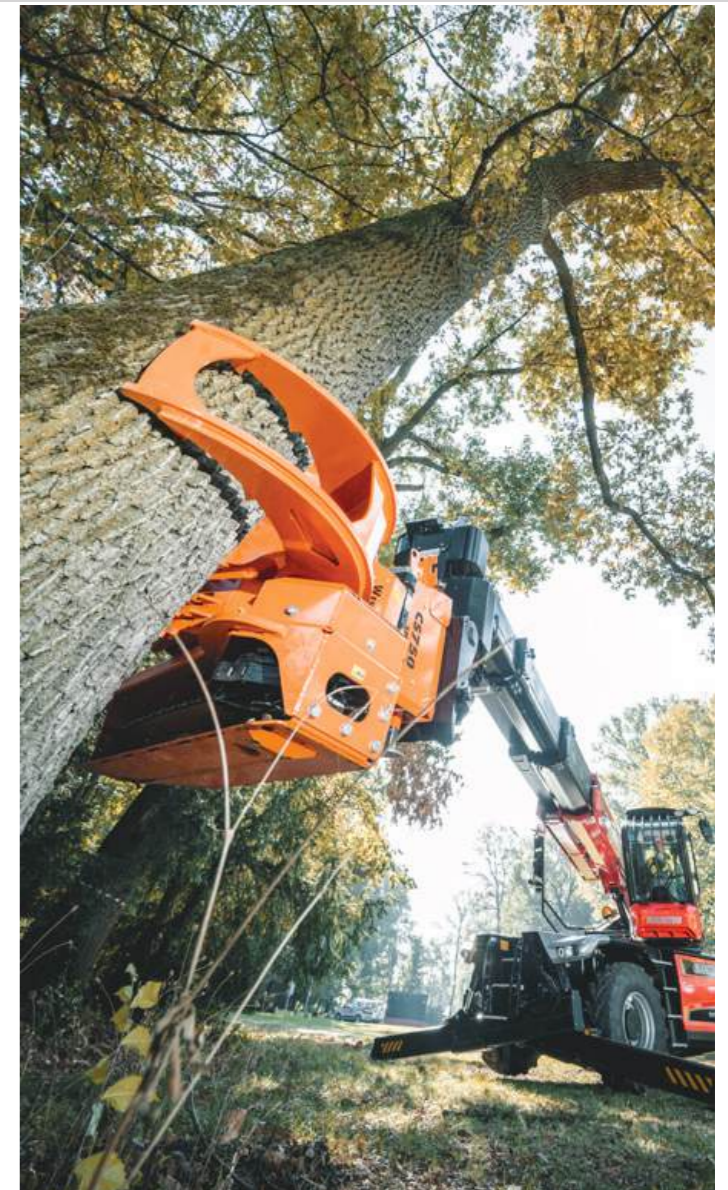
One primary advantage of the Manitou Pruning Grapple Saw is its versatility. It facilitates the pruning of trees and branches at various heights and angles, enabling operators to reach areas that might be challenging with conventional tools. This adaptability translates to increased productivity and the ability to tackle diverse pruning tasks within forestry, landscaping, or agricultural settings with a capacity to handle up to 3600kg and its 750 mm cutting diameter.

Safety is paramount in any work environment, and the Pruning Grapple Saw addresses this concern effectively. By allowing operators to perform cutting operations from the safety of the telehandler's cab, it minimizes the need for climbing or using additional equipment, reducing the risk of accidents and injuries associated with traditional pruning methods. Operations can even be performed at a distance using the remote control, enabling the operator to get the best view to execute the task safely and effectively.

Furthermore, the attachment's design emphasizes precision and control. The grapple saw's advanced hydraulic system provides operators with a high degree of accuracy in positioning and cutting, ensuring that only targeted branches are removed. This not only enhances the overall quality of the pruning but also minimizes unnecessary damage to surrounding vegetation.

The Manitou Pruning Grapple Saw is built with durability and longevity in mind. Constructed from robust high-strength Hardox® steel and incorporating cutting-edge engineering, it withstands the rigors of regular use in challenging environments. This durability translates to a lower total cost of ownership as the attachment maintains its performance over an extended operational life. Additional protection has also been brought to the machine thanks to hose and boom protection retrofittable to most Vision Plus models already in Australia

In summary, the Manitou Pruning Grapple Saw offers a multifaceted solution to the challenges of vegetation management. Its adaptability, safety features, precision, and durability make it a valuable asset for professionals involved in forestry, landscaping, and related industries, contributing to increased efficiency and improved work outcomes.



MANITOU ARBOR SOLUTION BROCHURE

We are excited to announce the launch of our new Arbor Solutions brochure. This comprehensive guide showcases our "One Stop Chop" solution for the arborist industry, including:

- The MRT Vision+ range with unmatched visibility and dynamic load charts.
- The new pruning grapple saw built with durability and longevity on mind.
- The ultra-light Manitou telehandler for increased handling capacity.
- The Compact Loader range from big to small and everything in between.
- A variety of robust attachments designed for the arborist industry.



[DOWNLOAD THE BROCHURE HERE](#)

ROTATING TELEHANDLER MRT-X 1845 VISION

Max. lifting height **18 m**

Max. capacity **4500 kg**

Max. outreach **15.20 m**

I.C. Engine power rating **116 Hp**



[CLICK HERE FOR MORE SPECS](#)

*Promotion ends 31/10/2024 or while stocks last. Image for illustration only. Full T&Cs available here.

ATTACHMENT DISCOUNT UP TO 50% OFF ON WINCH AND PLATFORM*



“Get 25% off your first attachment when purchasing a winch or an access platform with your MRT-X 1845. Purchase both a winch and an access platform and get a total discount of 50% on your two attachments!”



FIND YOUR DEALER [HERE](#)

ULTRA LIGHT MANITOU NOW IN OPEN CAB VERSION

ULM 412 H

FROM \$85,412^{+GST*}

Max. capacity	1250 kg
Max. lifting height	4.30 m
Breakout force with bucket	1880 daN
Ground clearance	0.29 m

Thanks to its 1250kg capacity at full height, the ULM 412H can easily place pallets of blocks or bricks, straw or hay bales... Its ultra compact dimensions, versatile universal skid steer hitch and rough terrain ability make the ULM the perfect all rounder in challenging space and ground conditions. Due to its lightweight, the ULM can also easily be transported on a small trailer.

[CLICK HERE FOR MORE SPECS](#)



FIND YOUR DEALER [HERE](#)

* Promotion ends 31/10/2024 or while stocks last. Image for illustration only. Full T&Cs available [here](#).

FROM MUSTANG TO MANITOU

In a significant shift for the construction and agricultural machinery industry, the iconic Mustang brand of skid steer and compact track loaders has rebranded to align with its parent company, Manitou. This marks a pivotal moment in the lineage of over 388 years of combined manufacturing expertise.

Mustang, renowned for producing their first skid steer in 1965, carved out a respected position as the second-longest manufacturer of skid steers after Bobcat, which introduced its first model in 1960. Over the decades, Mustang established a strong presence globally as a full line manufacturer, including in Australia with their debut in 1969 being imported and distributed by Tutt Bryant Equipment.

In 1997, a significant merger occurred when Gehl Company acquired Mustang Manufacturing Company. This acquisition unified the production lines of both brands, leading to synergies and shared innovations. Notably, Gehl's skid loaders were distinguished by their patented "Power View" lift arm.

In 2004, Manitou BF a French multinational known for its expertise in material handling equipment entered into a strategic partnership with Gehl for Telescopic loaders. Further consolidation came in 2008 when Gehl became a wholly-owned subsidiary of Manitou BF. This strategic alignment paved the way for greater integration and a broader product offering.

The year 2015 marked a milestone for Mustang as it celebrated 50 years of skid steer manufacturing excellence. By this time, both Gehl and Mustang had become nearly identical, differentiated mainly by

branding elements such as colour schemes and model designations.

In 2018, the decision was made to phase out the Mustang brand, a move aimed at streamlining operations and enhancing brand clarity within the Manitou portfolio. This decision culminated in 2019 with the official launch of Manitou-branded skid steer and track loaders in Australia. Those with a keen eye will recognise the Manitou model naming convention being the same as that used by the previously Mustang branded units.

Today, Manitou continues to build upon the rich heritage of Mustang, offering a unified product line that reflects decades of engineering prowess and customer-centric innovation. The transition underscores Manitou's commitment to delivering high-quality, reliable machinery under a single, globally recognized brand, ensuring continuity and reliability for customers worldwide. This evolution not only honours the legacies of Mustang but also positions Manitou as a leader in the skid steer and track loader market, ready to meet the evolving needs of modern industries.

With an extensive dealer network across Australia and New Zealand, you now have more than 104 points of Sale and service the Mustang heritage continues strong under the Manitou Banner.



3.99% FINANCE

2150 RT

WITH 4X1 BUCKET

\$109,999 ^{+GST*}



**OVER 12000LBS TRACTIVE EFFORT
AND OVER 6000LBS BREAKOUT FORCE**

FEATURES

Joystick, Air Cab, Rear Camera, Bluetooth Radio, High Flow, IdealTrax™, IdealAccess™, Powered Attachment Locking.

[CLICK HERE FOR MORE SPECS](#)

Overall Operating Height - Fully Raised	4267 mm
Dump reach - Full height	876 mm
Overall length with bucket	3769 mm
Overall width less bucket	1765 mm

* Promotion ends 31/10/2024 or while stocks last. Image for illustration only. Full T&Cs available here.

THE ORIGINAL TWINS

69 hp Yanmar
Direct drive
Level II FOPS/ROPS AC cab
Pilot ISO Joystick Control

Deluxe Air Seat
Rear Camera
Bluetooth Radio
No DPF / No AdBlue

1.99%
FINANCE

1650 R
WITH 4X1 BUCKET

WITH 3YR/3000HR TOTAL COVER EXTENDED WARRANTY

\$81,650 +GST*

[CLICK HERE FOR MORE SPECS](#)

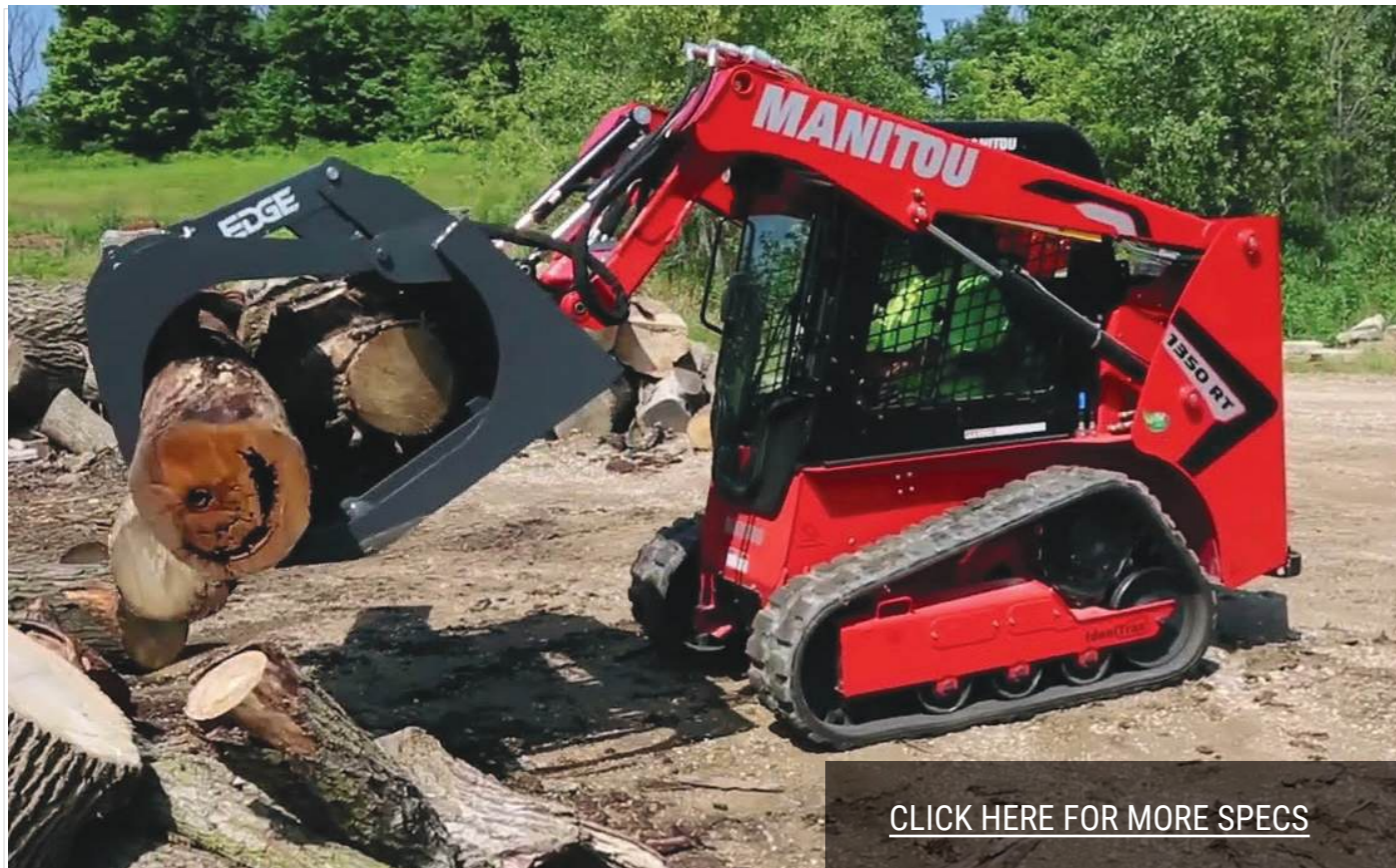
1650 RT
WITH 4X1 BUCKET

WITH 3YR/3000HR TOTAL COVER EXTENDED WARRANTY

\$91,650 +GST*

[CLICK HERE FOR MORE SPECS](#)

1.99%
FINANCE



[CLICK HERE FOR MORE SPECS](#)

TRACK LOADER

1350 RT WITH 4X1 BUCKET

AND 3YR/3000HR TOTAL COVER EXTENDED WARRANTY

\$79,999 +GST*

1.99% FINANCE

FEATURES

Joystick, Air Cab, Rear Camera, Bluetooth Radio, High Flow, IdealTrax™, IdealAccess™, Powered Attachment Locking.

Overall Operating Height - Fully Raised	3670 mm
Dump reach - Full height	592 mm
Overall length with bucket	3076 mm
Overall width with bucket	1450 mm



* Promotion ends 31/10/2024 or while stocks last. Image for illustration only. Full T&Cs available here.

SMOOTH AS MEWPS

200 ATJ-X

\$138,310 +GST*

Working height	20.28 m
Max. outreach	12 m
Platform capacity	230 kg
Number of people (indoor)	2

[CLICK HERE FOR MORE SPECS](#)



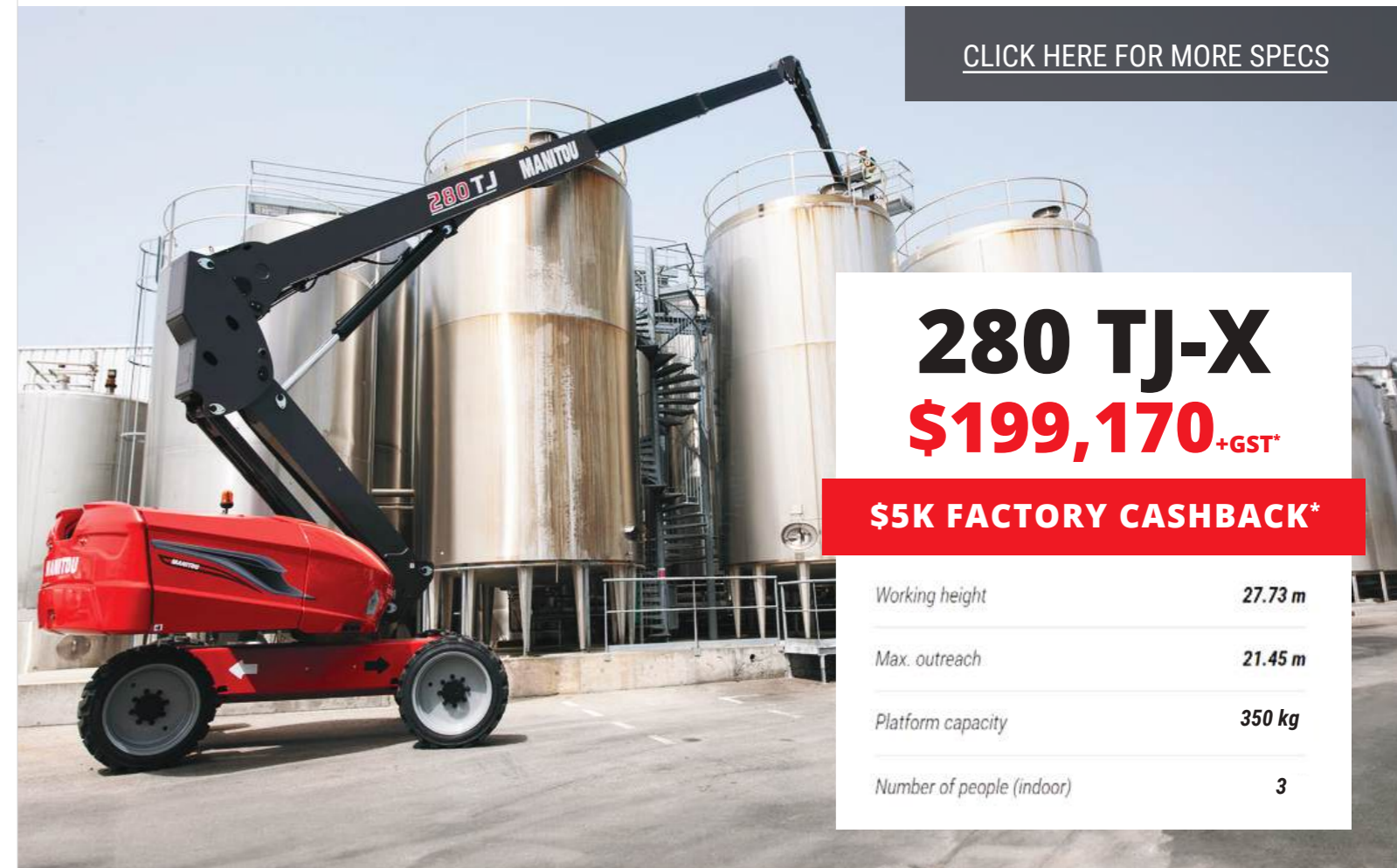
[CLICK HERE FOR MORE SPECS](#)

280 TJ-X

\$199,170 +GST*

\$5K FACTORY CASHBACK*

Working height	27.73 m
Max. outreach	21.45 m
Platform capacity	350 kg
Number of people (indoor)	3





BIG BAG HANDLER

PRICE **\$5,775+gst***



AGRICULTURAL BUCKET

PRICE FROM **\$6,330+gst***



GENERAL PURPOSE BUCKET

PRICE FROM **\$4,825+gst***



AGRICULTURAL MULTI-FUNCTION GRAB BUCKET

PRICE **\$13,590+gst***

[CLICK HERE FOR MORE SPECS](#)

MANITOU GROUP ATTACHMENTS
CORNER

* Promotion ends 31/10/2024 or while stocks last. Image for illustration only. Full T&Cs available [here](#).

FIND YOUR DEALER [HERE](#)



SPRING EDITION

manitou.com

2024



[All T&Cs available here](#)